



GEO QUEST

AUSTRALIA'S PREMIER
ADVENTURE RACE



Information Pack 2017

Pre- Race Information

Please visit www.geoquest.com.au for up to date information on the following:

- ▶ HQ Location and directions
- ▶ Accommodation options
- ▶ Program and Timings
- ▶ Other general event information



History

The GeoQuest Adventure Race was created in 2002 and has been held annually since that year. In the first year Rick White, the founder of Mountain Designs, saw great synergies with his brand and Mountain Designs have been a sponsor from the start.

Each year the organisers, Craig and Louise, choose a beautiful location somewhere along the NSW coast to host the race. The first three years the race was held on the South Coast, and since then North Coast locations have been chosen (it is a little warmer further North!).

Every year since the race's inception (except 2010) it has been held on the Queen's Birthday long weekend in June. The first two years of the race there was only the full 48hr course option. From the third year the Geo-Half was introduced.



GEOQUEST

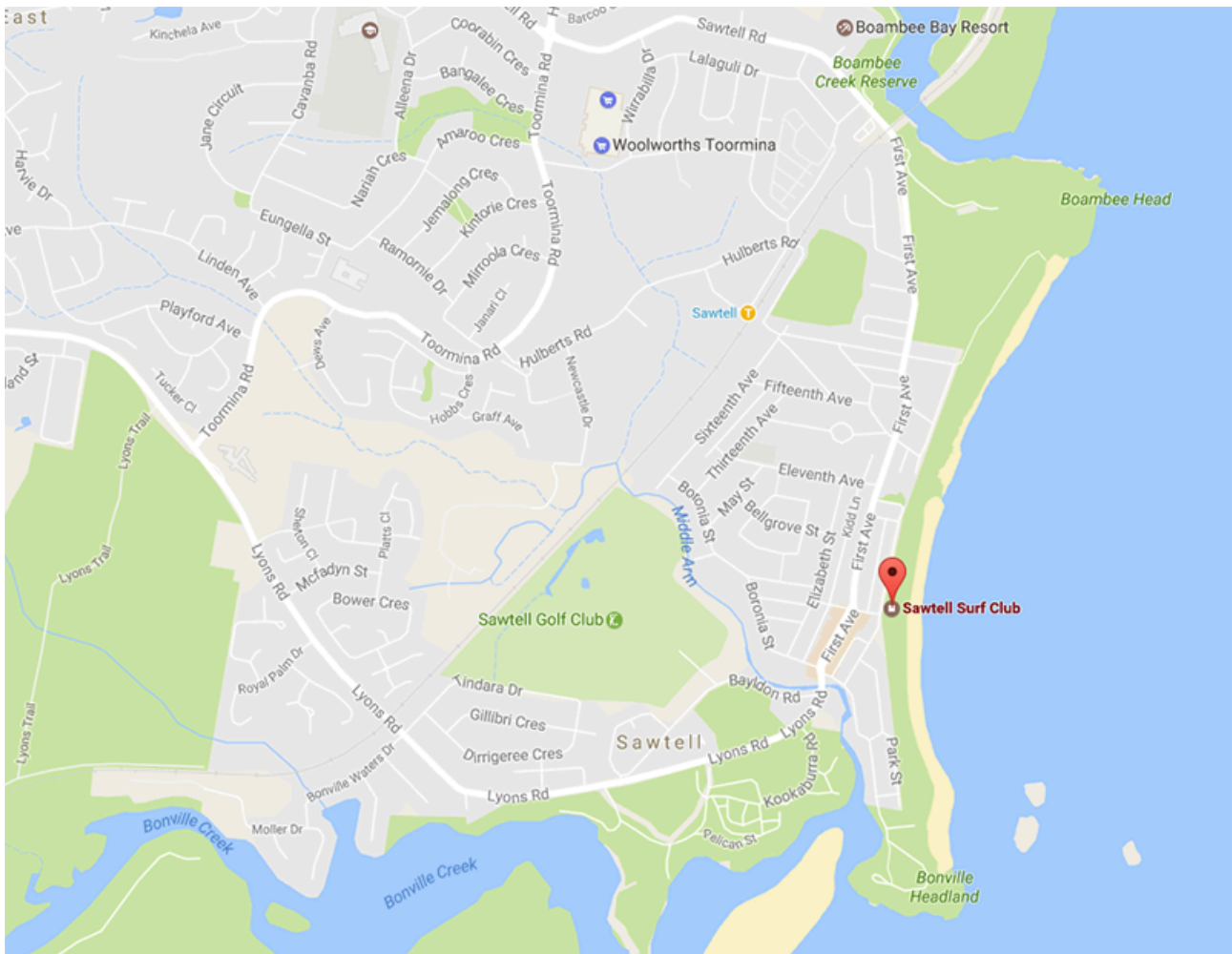
((()))
Track Me Live



HQ

The Mountain Designs GeoQuest 2017 will be held out of Sawtell, NSW. Headquarters is based overlooking the beach at the Sawtell Surf Lifesaving Club, on the corner of Fourth Ave & Second Ave, Sawtell NSW 2452. This is where teams will register, receive the course and is the location of the finish line and presentations.

Sawtell is close to Coffs Harbour NSW, approximately 500km drive North of Sydney and 400km South of Brisbane. For accommodation and general tourist information visit <http://sawtellnsw.com.au>.



GEOQUEST

Track Me Live



PROGRAM AND TIMINGS

THURSDAY

Evening – most teams arrive at HQ

FRIDAY

1200 – 1430 – Registration open

1500 – Race Briefing and Course Revealed

1700 – Media Briefing

1700 – Volunteer Official Brief

SATURDAY

0730 – Trackers issued to Teams

0745 – Race start brief and roll call

0800 – Race start

MONDAY

0730 – 1000 – Post Race Breakfast

0900 – 0930 Q & A Session with Winners of Full and Half Courses

0930 – 1000 Presentations

1100 – Course closed



GEOQUEST

((()))
Track Me Live



COURSE

Course and Disciplines

The Mountain Designs GeoQuest course is a linear adventure race. All teams begin the adventure at the same point, then navigate their way through each leg consecutively. At the end of each leg is a Transition Area where you change from one discipline to the next. At most Transition Areas you will be met by your support crew. You will not stop via HQ during the race. The race finish will be at HQ.

Disciplines this year include:

- Ocean kayaking (Full Course Only)
- Kayaking inland rivers and waterways (both Full and Half courses)
- Hiking/ trail running/ Coasteering (traveling along beaches, around headlands etc)
- Mountain biking
- Navigation

There is no specific “Mystery Discipline” for 2017. (Though there is still plenty of fun to be had :)

There are no significant portages planned.

Please ensure you have thoroughly researched what is involved with the race and are sufficiently prepared. The website www.geoquest.com.au has extensive information. In particular you can read reports from teams who have competed previously. These are linked to the results page of the site. There are many other sources of information, the internet, discussion groups, books etc.



GEOQUEST

((()))
Track Me Live



Race Finish and Cut offs

Official course closure is 11:00 am on the Monday morning. All teams must be back by this time.

If during the race you think it doesn't look like your team will finish the course, we recommend you still race for the full time allocated and finish as many legs as you can. You should attempt to collect at minimum one checkpoint per leg to give yourself the best chance of staying as a ranked team.

Check Points (CP)

Checkpoints (or "Controls") are a point marked on the map with a purple circle (and number/letter) that you will need to visit as a team during the race. At the physical location of a checkpoint you will find a 30cm x 30cm orange and white orienteering marker. These are usually tied to a tree branch or similar with string. Hanging from the marker is a small punch device that you must use to make an indentation in your control card/ and or race control bands. This indentation proves to the officials that you have visited that checkpoint. Some checkpoints may only have the punch chained to something secure (without the flag - which can tend to attract people to steal it!!!) so use the description to assist in locating the punch. These CPs may or may not have some red and white tape to indicate the general area of the chain.



All numerical CPs (CP1, CP2, CP3 etc..) must be collected in the correct numerical order!
Alphabetical CPs (CP A, CP B, CP C etc..) may be collected in any order as deemed most efficient by your team.

In some sections, in addition to the control card, all team members will be required to wear control wrist bands. This is to ensure all team members travel to the CP location and no team cheats by leaving a member behind. Control bands must NOT be removed from your wrist unless directed by an official. To punch the band it is easiest if you have a team mate do this for



GEOQUEST

Track Me Live



you. Punch in order of the arrows on the band. You must punch BOTH your wristbands AND master control card.

Missing CPs

You may arrive at a location you believe is correct and you can't find the checkpoint (e.g. you are in the wrong location or it has been stolen or incorrectly placed by the organisation). You can continue to search for the checkpoint, however if you are absolutely certain the control is missing, it is recommended you take a photo of the area if you have a camera. You should also ensure your tracker has a good view of the sky for approximately 5 minutes to register your location. If the race organisation verifies the control is missing or misplaced, and you can prove you were in the correct spot, you will be credited with this checkpoint. No time adjustments will be made.

Course Markings

No direction arrows, tape, markers etc are placed on the course (unless specifically noted in the Course Notes or on Maps).

TIME ESTIMATES

"Fast" time estimates are based on estimated speed of a top 3 team completing that section in good weather conditions and excluding stops/sleep. "To Finish" times are based on estimated speed of a team who will complete the full course and finish just prior to the final race cut off, completing that section in good weather conditions and excluding sleep.

Environmental Impact

- ▶ Human Waste: You must bury all human waste 20cm below the ground and at least 100 metres from creeks or water ways, or alternatively use a public toilet.
- ▶ Rubbish: You must carry all rubbish with you to a bin. This particularly relates to the gel packets. If you drop litter on the course we will not be able to get permissions to use areas in the future. If you see rubbish left by another team, please pick it up. We all accidentally drop things, so do the right thing and ensure we can continue to use beautiful areas in the future.
- ▶ Wildlife: Hopefully you will see some wildlife during the event. Do not approach or disturb wildlife.
- ▶ Tracks: Minimise the impact on vegetation by using existing trails where possible.
- ▶ Gates: Leave them as you found them.

Toilets and Water

There are toilets at some of the transition areas. These are detailed in the course notes. Water is available at some but not all TAs and CPs. Plan wisely for this!!



GEOQUEST

 **Track Me Live**



EQUIPMENT

Mandatory Equipment

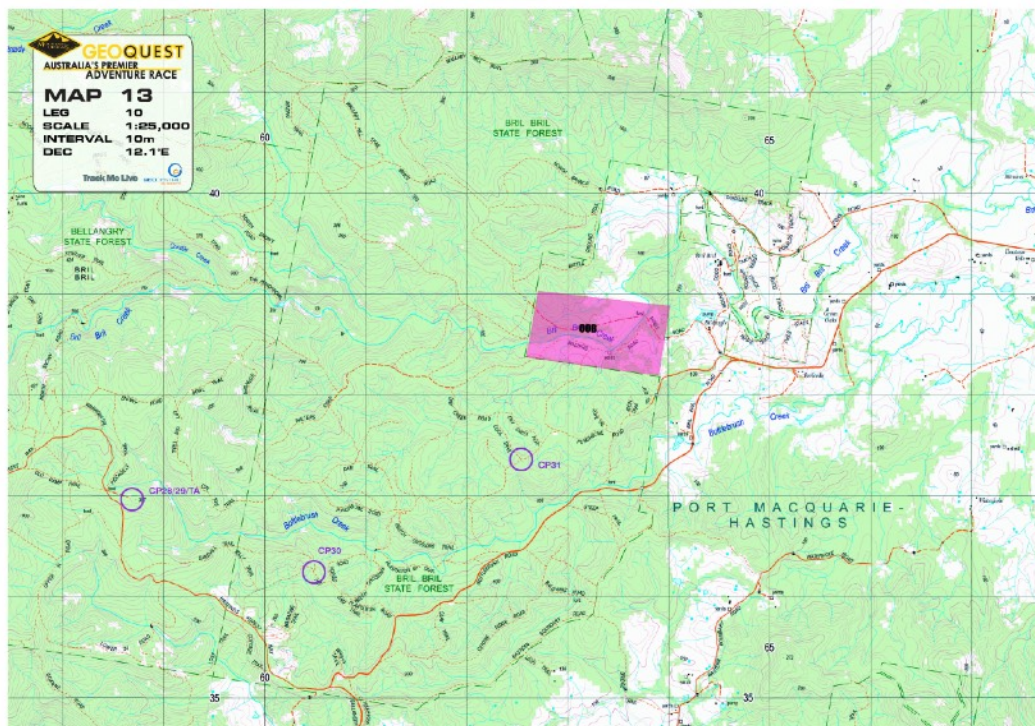
The most up to date Mandatory Equipment list is on the website www.geoquest.com.au. This is the list that will be used and please ignore any reference to the AR World Series Equipment list. Mandatory equipment checks will be conducted during the race.

Race Maps

Your team is provided with TWO sets of colour 1:25k topographic maps, on A4 & A3 sheets.

One set is on waterproof paper and doesn't require contacting or laminating. The second set is provided on plain paper.

There is also an overview map included. The maps have been printed from common source data, meaning that all colours, symbols, contour intervals, magnetic variation and scale are consistent between all race maps.



Race Bibs

Every competitor is provided with a race bib that must be worn at all times during the race. These are returned at the finish line. Generally lower numbers are allocated to Full Course teams and higher numbers to Geo-Half teams. Numbers 1, 2 & 3 are reserved for the team who placed 1st, 2nd and 3rd in the Full Course in the previous year.



GEOQUEST

((()))
Track Me Live



Phones – Compulsory Equipment

Don't forget you are required to provide one fully charged mobile phone on the Telstra 3G/4G network (Optus & Vodafone don't get sufficient coverage). Lets face it, if you need to make an emergency call, you want to get coverage.

There is good Telstra 3G/4G coverage throughout most of the course. Please note that coverage is generally better on high points, or on points with direct view of a phone tower (usually towards populated areas along the coastal strip). Coverage lessens as you head inland, and certainly when in the valleys (where there may be no reception at all).

Your phone **MUST** be turned off, sealed inside one of the security tamper proof bags provided by the race organisers. It or any other phone must not be used at all while you are racing unless it is for an emergency. You are **NOT** permitted to call your support crews, surf the live site or find your location on a map! Your emergency phone will be sealed on Saturday morning on the start line when you receive your tracker. Make sure you have a waterproof bag for your phone as the security bag we provide isn't waterproof. Your security bag will be checked when you cross the finish line.

Personal GPS

If you would like to record your route you are able to include a personal GPS inside your sealed bag. Note - you will not be able to see it once it is sealed up (including changing batteries). Again the integrity of the bag will be checked at the finish line.

Geo-Half Kayaks

Geo-Half Kayaking – Organisers will provide you with kayaks. You will need to provide a throw bag or tow rope, whistles, glow sticks as per the equipment list.

Kayaks used will be double CTR skis. More information can be found at <http://spiritpaddle.com.au/ProductDetail/15/DOUBLE-CTR-SKI>



GEOQUEST

Track Me Live



Geo-Half PFD's and Paddles

Geo-Half competitors are welcome and encouraged to bring your own paddles and PFDs.

Organisers can provide PFDs and Paddles if you need, however you **MUST** let us know how many you need by June 2nd as we need to source these for you. Please email adam@agtrix.com with the sizes you require.

If you do not let us know, you will not have one provided. Pre-ordered PFDs and paddles will be given to you at race registration and be collected back at the end of the race.



GEOQUEST

Track Me Live



SAFETY

Participant Responsibility

During the event you must be aware the rescue by the organisers or emergency services may not be possible immediately. In the first instance you are responsible for yourself and your team mates. Organisers have assets in place to assist, but for whatever reason they may not be immediately available.

It is not practically possible to provide all the safety needed for all the possible scenarios. If you are not willing to accept this self responsibility, you should not start the race.

If you get to a point in the course that you decide you are not comfortable and confident in completing safely, it is your responsibility to do something about it. If you feel the level of inherent risk is unacceptable, do something about it. Avoid it, withdraw, it is your decision.

Safety Assets

The safety assets for this event include:

- ▶ Firstly your team mates and support crew.
- ▶ Event officials with first aid certificates and training.
- ▶ 1 x First Response team with first aid trained officials.
- ▶ Watercraft safety including event officials and the Surf Lifesaving Club for ocean kayaking.
- ▶ Normal access to emergency services via '000'.



No Road Closures

No roads have been closed for the event. You must use extreme caution any time you are on a road. You must obey road rules at all times.



GEOQUEST

Track Me Live





GEOQUEST

 **Track Me Live**



SUPPORT CREWS

Support Crews

Support Crews will receive a briefing at the 1500 hrs course hand out. Make sure at least one of your support crew can make it to this brief. Race officials will try to help you get to the right places at the right time, but ultimately this is you and your team's responsibility.

Support crew notes this year will only be available electronically as a .PDF file which will be linked to the main www.geoquest.com.au website at 1500hrs Friday.



A four wheel drive vehicle is not required, but you will be required to drive on good unsealed roads. It is recommended that you fill your vehicle with fuel before the start. 24hr service stations may be difficult to find.

Transition Areas

There are two types of mid leg TAs. No other equipment may be pre-positioned anywhere else on the course.

- Support Allowed – At these TAs teams have full access to support crews.
- No Support Allowed – No Support Crew are allowed to these TAs. They are generally remote, hard to get to and have little parking. They may also be designated to allow support crews some rest time.

Family and Friends

Your family, friends etc are more than welcome to come to the event to cheer you on. Over the years the number of families coming to the event for a holiday weekend has increased significantly. Most teams now come with a large entourage of family and friends!



GEOQUEST

Track Me Live



LIVE COVERAGE

Live Web Coverage

As in previous years, the event will have dedicated live web site. There will also be a version optimised for your mobile devices (eg iPhone/ iPad). The link for this will be shared during the week before the race. (and linked to www.geoquest.com.au)

Teams will carry tracking devices so the world can watch your every move while your race. Images, interviews, social media and maps of the course will also be posted to the site. Coverage will commence on Friday.

Recommended - If your support crew can access a smart phone or tablet, they will be able to watch you throughout the race and know when to arrive at transitions.



TWITTER: Those involved in the event often share useful information via twitter. Make sure you use and search the hashtag #geoquestar



FACEBOOK: Photos and updates will be posted on the Geocentric Facebook page - <https://www.facebook.com/geocentricoutdoors>

Instagram Competition

The Instagram competition will be back with some great prizes up for grabs. The winning photo must tell a story about the race. To be in the running, simply upload your files onto Instagram and tag it using #geoquestar The winner will be announced at the presentations.

Tracking

Each team will be issued with a live tracking device. This is to be kept inside the water proof container/bag provided and it MUST be carried in the top of your back pack otherwise it won't work. The device is water resistant but not designed to be submerged - keep it in the container/bag!

The device stores your location through the inbuilt GPS and will transmit every 3 minutes providing it has reception. If it can't send, it will continue to store your locations until it gets reception.

Please note if you are lost and in a remote area without phone coverage, we may not be able to see your location. Move to high ground and different aspects of a hill or high point for a better chance of GPS reception.



GEOQUEST

 **Track Me Live**



RACE RULES

Race Rules

There is a copy of the race rules on the website at www.geoquest.com.au. The event now uses the standard Adventure Racing World Series rules of competition.

Adventure racing relies on the honesty of teams during the race. If you observe a team on the course breaking any of the race rules please raise this directly with the team. They may be new to the sport and not be aware of some particular rules. There may also be a valid reason or you may have misunderstood the situation - in which case you can clarify the situation there and then.

Out of Bounds (OOB)

There are a number of out of bounds areas marked on the race maps in pink. These are generally dangerous areas such as the main Highway and other major roads, other imposed restrictions from NSW Forestry and National Parks (eg recent harvesting), or specific private land holdings that we do not have permission to use.

Out of bounds areas are STRICTLY no go. Traversing these areas will receive heavy penalties or disqualification. If you find yourself in an OOB area, you must return the way you entered and go around.

Private Property is always out of bounds unless you are told it is specifically open to the event. Some private property may be marked in pink on race maps where the organisers think it may help teams when planning a route. However, you are still prohibited from entering private property even if it is not marked in pink on your race maps.

Penalties and Disqualifications

Disqualifications will normally result from a deliberate breach of the race rules. Time penalties will normally result from an un-intentional breach of the rules or non-completion of a segment of the course. The penalty will usually be in the form of additional time added to a team's final race time.

Below is an indication of penalties given at past GeoQuest races:

- Break 100m rule - 4-8hrs, or DQ if this occurs in potentially dangerous area (including ocean kayaking).
- Missing mandatory equipment at a check - 2-4hrs.
- Not wearing race bib as outermost item - 1-2hrs.
- Lost control card/ wrist band - 0.5 - 1hr per band.
- Incorrectly punching wrist band/ not punching master card with wrist band - 15 mins.
- Missing CP - as per deviation time in rules.
- Late finish - 2.5 x time past official finish time.
- Assistance by safety craft - 6-10hrs.
- Rescue from dangerous situation - DQ.



GEOQUEST

 **Track Me Live**



RACE FINISH

Finish Line

Finish line will be at Race HQ.

BBQ Breakfast

Each year a community group is engaged to cook a BBQ breakfast for all the teams and 2 x support crews. The event provides them a donation and it is a great way that we can support the local community. The breakfast goes from 0730 on the Monday through to 1000. Additional servings can be purchased on the day for a small amount.

Presentations by Winning Teams

From 0900-0930 the winning teams in each category are invited to share their race experience. There is also a question and answer session at the end of their talk where you have the opportunity to ask them just about anything you like!

Race Presentations

These are short and sweet as we know everyone is getting ready for a long drive home. The main reason to stay around for the presentations is the large number of random draw prizes available!

Course Closes

All teams must be finished by 1100.



GEOQUEST

Track Me Live



FINAL POINTS

Volunteers

Many event volunteer officials have given up their time to assist over the weekend which makes it possible for you to participate in this adventure race. Please be courteous to them on the course and make sure when you see them that you tell them you appreciate them contributing their time to support this event and our sport.

If there is an issue on the course that causes any anger or frustration then you must talk to the event directors. Bad behaviour to the volunteer officials will not be tolerated.

Final Points

Don't forget, there is a lot of information on the web site (www.geoquest.com.au) that you will need to be aware of.

Reminder - every participant in the Mountain Designs GeoQuest needs to have Ambulance cover. If you have forgotten to do this, make sure it is done prior to race registration. Check that your team mates have the required cover. Competitors who live in states such as Queensland and Tasmania do not require a separate policy as they are already covered under state legislation.

Insurance - The event organisers have a public liability insurance policy to the value of 20 million dollars. This is a compulsory insurance policy in Australia for events that are organised on, or cross through, any form of government land/public place. This is not personal accident insurance for you! It is strongly recommended you have your own personal accident insurance.

Team captains – once again please note that this information has only been sent to those email addresses you provided on your entry form. Don't forget to tell your team mates what is happening!

If you have any questions, please contact me

Craig Bycroft
Event Organiser/ Director
Geocentric Outdoors
www.geocentricoutdoors.com.au

0419 427 244 (mobile)
+61 419 427 244 (international)



GEOQUEST

((()))
Track Me Live



DECLARATIONS - Team.....

Please bring this signed form to registration:

INFORMATION PACK CONTENTS

Each team member has read and understood the entire contents of this Information Package:

Signature:

Signature:

Signature:

Signature:

EMERGENCY MEDICAL TRANSPORTATION COVERAGE/ INSURANCE

Each team member has cover or insurance for the costs of a medical evacuation by civilian emergency services:

Signature:

Signature:

Signature:

Signature:



GEOQUEST

 **Track Me Live**



ACKNOWLEDGEMENT, WAIVER AND RELEASE COMPETITORS

WARNING: THIS IS A LEGAL DOCUMENT THAT AFFECTS YOUR RIGHTS. PLEASE READ ALL OF (2 PAGES) THE DOCUMENT CAREFULLY. ALL COMPETITORS MUST SIGN THIS FORM.

1. I understand and acknowledge that participating in the GeoQuest Adventure Race (the **Event**) from 9-12th June 2017 is a dangerous activity. The Event may involve mountain biking, kayaking, trekking, running, navigation, rafting, snorkelling, Stand Up Paddle boarding, abseiling, use of a tyrolean traverse and/or a flying fox, rock climbing, ascending, swimming, rock scrambling, coastal travel, sailing, driving, crossing and/or travelling on roads, roller skating, caving, snow traversing, traversing isolated and remote tracks, repairing equipment and other unspecified activities. I am aware and understand the activities I will potentially be involved in. Hazards include, but are not limited to remoteness from assistance or medical aid, the extremely strenuous nature of the Event including participating at night, becoming lost, vehicle traffic, actions of other participants spectators and public, weather conditions, flood, fire, storm, sleeplessness, hypothermia and heat exhaustion, condition or suitability of participant's equipment, natural and man made objects in the environment and other unspecified hazards. I am aware of the hazards involved and acknowledge that there is always risk of injury (including permanent injury, mental injury, paralysis and death) and damage to my property. In my judgment I have sufficient competence, knowledge, common sense, experience, survival skills and equipment to participate in all Event activities in a manner safe to myself and others.

2. I certify that I am physically fit and that I have sufficiently trained for participation in the Event and have not been advised otherwise by a qualified medical person that I can not participate in the Event and that I have been given the opportunity by the organiser to attend a pre event briefing session.

3. In consideration of being allowed to participate in the Event, I (on my own behalf and on behalf of my executors, administrators, heirs, next of kin, successors and assigns):

- a. WAIVE, RELEASE AND DISCHARGE from any and all liability for death, disability, personal injury, property damage, property theft and all other risks, claims or actions of any kind (including breach of contract, acts of negligence to the fullest extent permitted by law) whatsoever and however occurring, together with any legal fees incurred as a result of any such claim whether it is valid or not, which I at any time had or have as a result of or in connection with, directly or indirectly, my participation in and my travelling to and from the Event the following person or entities: Geocentric Pty Ltd (**Geocentric**), Event sponsors, Event producers, community organisations, all State, Federal and Local Government authorities in which the Event may be staged and the owners, licensees or occupiers of any property upon which I enter and their (its) respective officers, directors, employees, independent contractors, sponsors, representatives, agents, members and volunteers, including medical and paramedical personal appointed for the Event;
- b. INDEMNIFY AND HOLD HARMLESS the persons or entities mentioned in paragraph 3(a) from any and all liabilities, claims or actions (including negligence) whatever or however caused arising as a result of or in connection with, directly or indirectly, my participation in and travelling to and from the Event, including any claim by my (or my team's) support crew or any person assisting me or my team;

4. I acknowledge that I am responsible for my personal possessions and equipment during the Event.



GEOQUEST

Track Me Live



5.I accept the communications, search, rescue and medical aid arrangements put in place by the organisers. I understand and agree that in the first instance I am responsible for the provision of first aid to myself and those around me. As a competitor or support crew I am responsible for myself or my team's timely removal from the course to a medical facility. I give my consent to receive any first aid and medical treatment which may be deemed advisable in the event accident, injury and/or illness as a result of my involvement in the Event.

6.I certify that the medical information supplied by me on the entry form is true and I consent to and authorise that information to be provided to any medical practitioner, ambulance officer or any person involved or associated with any medical treatment or assistance that may be given to me as a result of my participation in the Event, regardless of whether the treatment is given.

7.I agree to allow my photograph, video, multimedia or film likeness and or name to be used for any legitimate purpose by Geocentric, it's sponsors or assigns without notification, payment or compensation.

8.I acknowledge that the Event arranged insurance covers myself for public liability whilst participating in this event. I am responsible for my personal accident insurance and ambulance cover.

9.I acknowledge that the organisers reserve the right to alter the advertised course if conditions warrant. I agree that the organisers reserve the right to cancel or postpone the Event due to weather conditions, natural disaster, "acts of god", terrorism, war or any other reason so deemed by the organisers, and that my entry fee will be non-refundable.

10.I agree to abide by the Event rules and directions of officials and I understand that my entry may be voided if through my actions or behaviour, if in the opinion of the organisers, I break any of the rules or I bring the Event into disrepute. I further understand that the organisers reserve the right to reject any entry without having to justify their actions.

11.I certify that I will be eighteen (18) years of age or older before the Event starts or that I have full permission from my parent/guardian and they have read and understood the above and will co-sign below.

I have carefully read this form (2 pages) and understand and agree to its contents.

TEAM NAME:		TEAM NUMBER:
Printed Full Name	Signature	Date
Printed Full Name	Signature	Date
Printed Full Name	Signature	Date
Printed Full Name	Signature	Date



GEOQUEST

Track Me Live



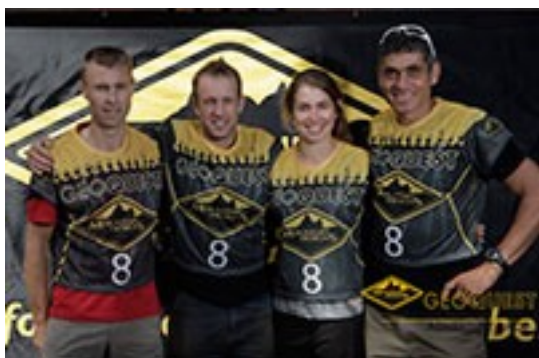
WALL OF FAME



2016 WINNERS: www.adventurejunkie.com.au
 TEAM MEMBERS: Hugh Stodart, Serge Kurov, Josh Street, Bernadette Dornom (L to R)
 WINNING TIME: 24 Hours 27 Minutes
 COURSE LOCATION: Port Macquarie, NSW North Coast



2015 WINNERS: www.peakadventure.com.au
 TEAM MEMBERS: Sam Steadman, Josh Street, Emma Weitnauer, Jarad Kohlar (L to R)
 WINNING TIME: 27 Hours 15 Minutes
 COURSE LOCATION: Hawks Nest Tea Gardens, NSW North Coast



2014 WINNERS: Seagate
 TEAM MEMBERS: Jacob Roberts, Stuart Lynch, Sophie Hart, Nathan Faavae (L to R)
 WINNING TIME: 25 Hours 25 Minutes
 COURSE LOCATION: Crescent Head, NSW North Coast



2013 WINNERS: Macpac
 TEAM MEMBERS: Jarad Kohlar, Damon Goerke, Rob Preston, Kathryn Preston (L to R)
 WINNING TIME: 27 Hours 34 Minutes
 COURSE LOCATION: Harrington, NSW North Coast



GEOQUEST

Track Me Live





2012 WINNERS: Macpac

TEAM MEMBERS: Kathryn Preston, Rob Preston, Richard Mountstephens, Damon Goerke (L to R)

WINNING TIME: 35 Hours 17 Minutes

COURSE LOCATION: Forster, NSW North Coast



2011 WINNERS: blackheart.com.au

TEAM MEMBERS: Kim Willocks, Rob Preston, Damon Goerke, Josh Street (L to R)

WINNING TIME: 28 Hours 30 Minutes

COURSE LOCATION: Nambucca Heads, NSW North Coast



2010 WINNERS: Mexicans

TEAM MEMBERS: Andrew Wolstencroft, Damon Goerke, Kim Willocks, David Provan (L to R)

WINNING TIME: 33 Hours 10 Minutes

COURSE LOCATION: Port Macquarie, NSW North Coast



2009 WINNERS: Dude, Where's My Bruno

TEAM MEMBERS: Kris Plain, Katrin Van der Spiegel, Richard Mountstephens, Sam Maffett (L to R)

WINNING TIME: 30 Hours 3 Minutes

COURSE LOCATION: Forster, NSW North Coast



GEOQUEST

Track Me Live





2008 WINNERS: APEX

TEAM MEMBERS: John Jacoby, Christie Sym, Simon Manson, Hugh Stodart (L to R)

WINNING TIME: 28 Hours 43 Minutes

COURSE LOCATION: Emerald Beach, NSW North Coast



2007 WINNERS: adventuregear.com.au

TEAM MEMBERS: John Jacoby, Guy Andrews, Sam Maffett, Kim Beckinsale (L to R)

WINNING TIME: 28 Hours 17 Minutes

COURSE LOCATION: Sawtell, NSW North Coast



2006 WINNERS: Mountain Designs

TEAM MEMBERS: Gary Sutherland, Brit Kaling, Brett Stevens, Craig Stevens (L to R)

WINNING TIME: 35 Hours 57 Minutes

COURSE LOCATION: Stuarts Point, NSW North Coast



2005 WINNERS: AROC Mountain Designs

TEAM MEMBERS: Alina McMaster, Kris Clauson, Matt Dalziel, Tom Landon-Smith (L to R)

WINNING TIME: 29 Hours 13 Minutes

COURSE LOCATION: Bonny Hills, NSW North Coast



GEOQUEST

((((()))
Track Me Live





2004 WINNERS: AROC Mountain Designs

TEAM MEMBERS: Tom Crebbin, Tom Landon-Smith, Alina McMaster, Nigel Aylott (L to R)

WINNING TIME: 29 Hours 12 Minutes

COURSE LOCATION: Eden, NSW South Coast



2003 WINNERS: AROC GoLite

TEAM MEMBERS: Tom Crebbin, Matt Dalziel, Tom Landon-Smith, Alina McMaster (L to R)

WINNING TIME: 28 Hours 07 Minutes

COURSE LOCATION: Bendalong, NSW South Coast



2002 WINNERS: Mexicans

TEAM MEMBERS: Nigel Aylott, Damon Goerke, Kim Willocks, Mark Mex (L to R)

WINNING TIME: 41 Hours 05 Minutes

COURSE LOCATION: Nelligen, NSW South Coast



GEOQUEST

Track Me Live

